

ANTARCTICA 2027

FLY&CRUISE TOP EXPEDITION



2-9 MARCH 2027



WHALE SEASON



ICE EXPERIENCE



HIGH END TRIP



70 GUESTS ONLY



8 DAYS, 7 NIGHTS



TOP TIER CRUISE



INVITATION BASED

OUR LUXURIOUS SHIP
MAGELLAN EXPLORER





WOULD YOU RATHER FLY OR SAIL THE DRAKE PASSAGE?



The **Antarctic Circumpolar Current** (ACC) is the strongest ocean current on Earth, uninterrupted by land for millions of years. The **Drake Passage** is where that huge current converges through a small passage, earning its nickname - roughest sea on Earth. Named after discoverer, Sir Francis Drake, it's notorious for sea vessels with waves over 40 feet too often. The 2.5 day long journey on a boat through this "washing machine" experience, is not for the weak stomachs.

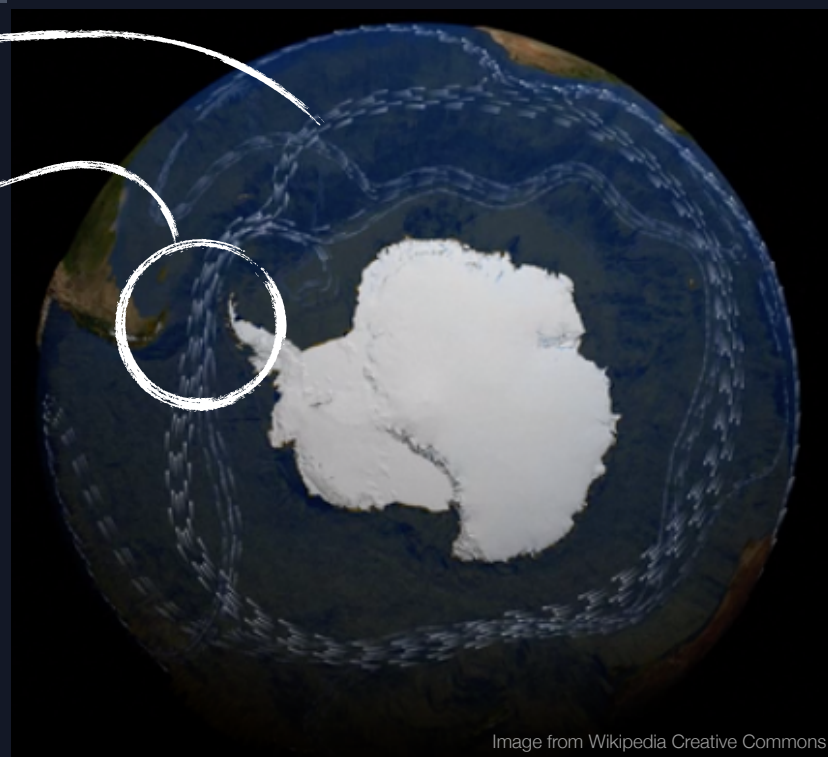


Image from Wikipedia Creative Commons

Luckily, there's no need for you to find out about the Drake's formidable waves for yourself! Instead of crossing the Drake Passage by boat, wasting time and energy, we have the advantage of saving 5 days of sailing by simply flying conveniently over Drake in a 2 hour **specially chartered jet airplane**.

If only the early sailors of the Antarctic had known we would be able to do that... Our chartered ship, the Magellan Explorer, will wait for us near King George Island, and we will board it after a short hike and with the help of Zodiac boats.

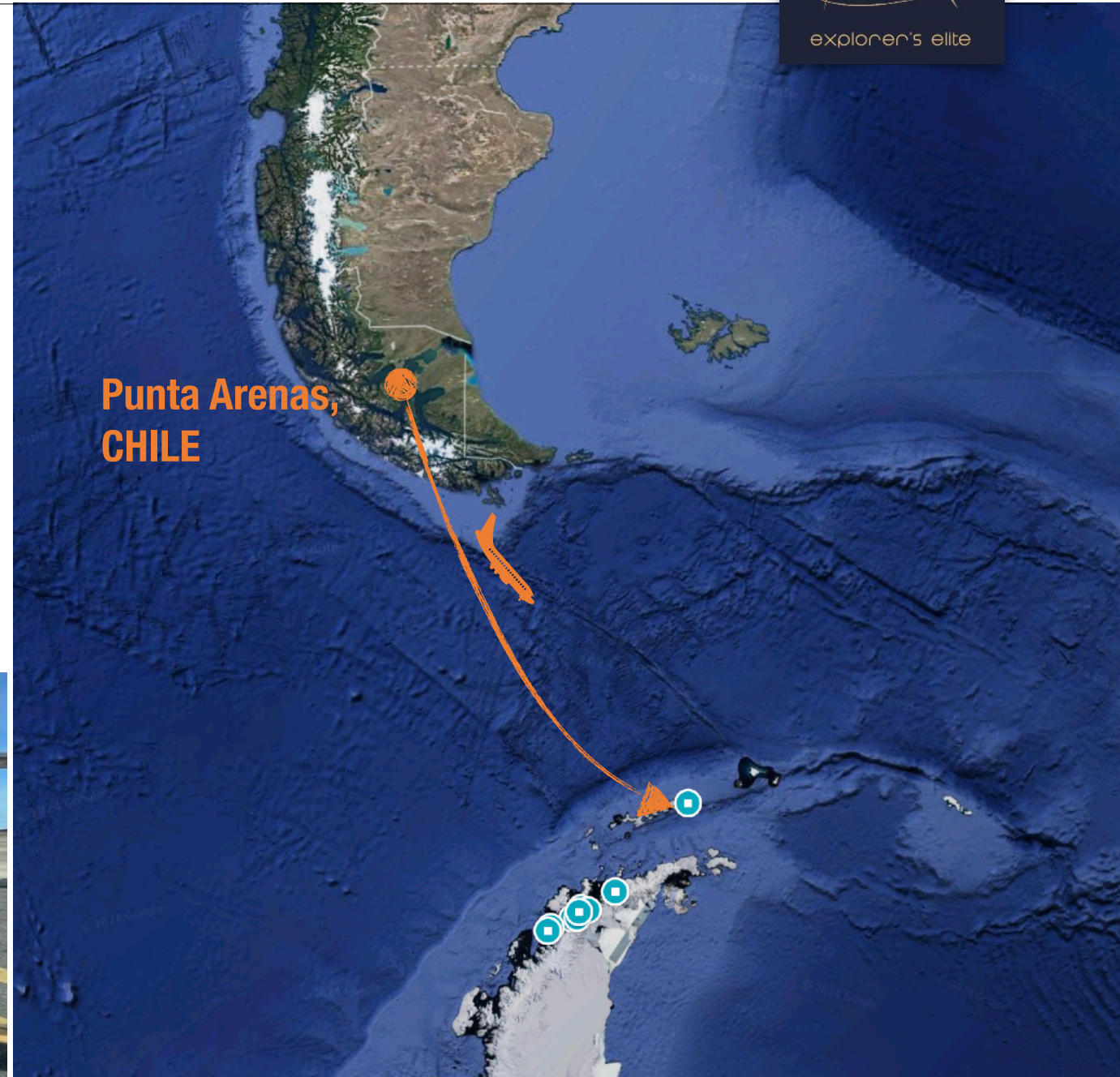
ONCE WE CROSS THE DRAKE - OUR EXPEDITION CRUISE BEGINS!

PUNTA ARENAS ARRIVAL - DAY 1

Arrive in Punta Arenas before 2:00 pm, where you will be welcomed by our staff and transferred to your hotel. Today, you will have a mandatory briefing with important trip information. In the evening, enjoy dinner of typical Chilean food with your fellow adventurers and guides.

FLIGHT TO ANTARCTICA - DAY 2

Begin your Antarctic air-cruise with a scheduled two-hour flight from Punta Arenas to King George Island in Antarctica. Upon landing, the clear Antarctic air will fill your lungs. You will then walk 2km, passing Chile's Frei Station, to reach the shore and board a Zodiac that will take you to your boutique expedition vessel. Immediately, we will start heading south, towards the peninsula, so that in the morning we will already be at our first landing site.





DAY 3-7 - ANTARCTIC EXPLORATION

Cruise around the western coast of the Antarctic Peninsula, sailing among the spectacular landscapes Antarctica offers. Each day, we disembark by Zodiac and explore with our expert guides. We will reach all the best landing sites of the Antarctic Peninsula, at the best times of the day.

On board, you will enjoy our educational programs and presentations, while meeting extraordinary individuals of high impact and passion for conservation and our environment.

Thanks to our small size ship, we will achieve so much more than any other vessel in the Antarctic waters, and will be able to spend more time ashore.



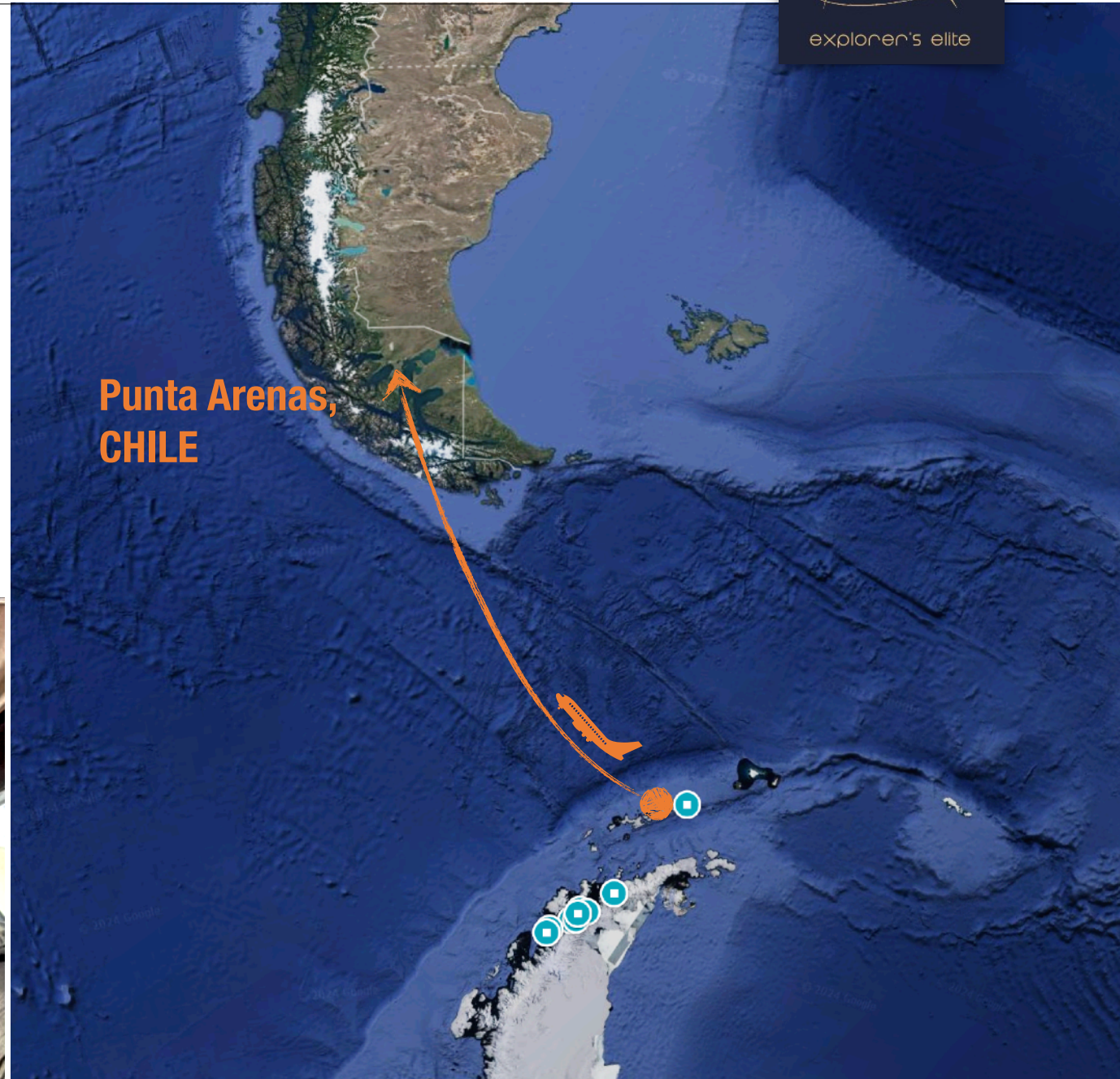
OUR ITINERARY

HEAD NORTH AND FLY BACK - DAY 7

We will sail back to King George Island and bid farewell to Antarctica before boarding your flight back to Punta Arenas. Upon arrival from the 7th continent, transfer to our hotel for the night and enjoy an evening at your own leisure.

MORNING FAREWELL - DAY 8

After breakfast we will transfer you to the Punta Arenas Airport for your journey home, or your continuous exploration of Tierra Del Fuego in the southern tip of South America.



A FEW MOMENTS FROM OUR PREVIOUS EXPEDITIONS



ANTARCTIC LUXURY EXPEDITION - MARCH 2027

MARCH 2-9 2027 8 DAYS, 7 NIGHTS

Pricing Per Person *Limited Availability

Category	Size	Details	Cost
Single Cabins	210 ft2 19 m2	Cabin with sitting area and balcony	\$28,995
Grand Suites	480 ft2 44 m2	Two-room suite with sitting room, balcony, and bedroom	\$26,995
Penthouse Suites	360 ft2 33 m2	Suite with sitting room, balcony and bedroom area	\$27,995
Deluxe Veranda Cabins	240 ft2 22 m2	Cabin with sitting area and balcony	\$23,995
Veranda Cabins	210 ft2 19 m2	Cabin with sitting area and balcony	\$21,995
Porthole Cabins	200 ft2 18 m ²	Cabin with sitting area and porthole	\$19,995
Triple Suites	480 ft2 44 m2	Suite with two bedrooms, balcony, and sitting area	\$24,995

*** CONTACT FOR AVAILABILITY**

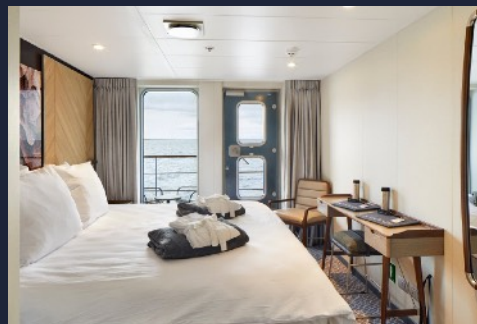
Cabin Types



Penthouse Suite



Deluxe Verdana



Verdana Suite

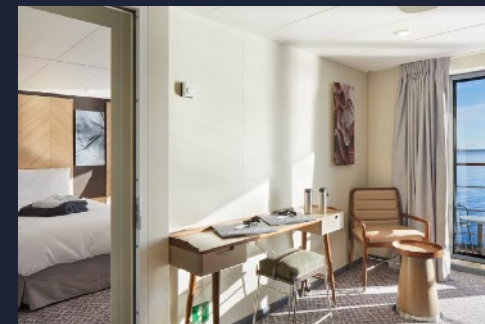
Cabin Types



The Verdana

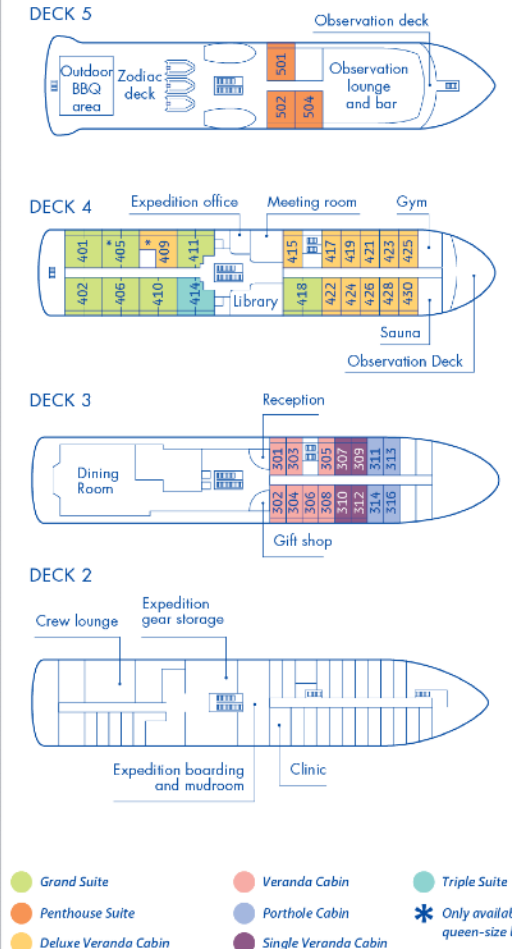


Porthole Cabin



Grand Suite

Magellan Explorer Deck Plan



OUR 2027 FLY AND CRUISE EXPEDITION TO ANTARCTICA

ADDITIONAL IMAGES



Questions and Answers

Q - Who is this expedition for?

A - This is a special expedition for people who love adventure, nature and living their dreams. Who meant to experience the fragile Antarctic and learn first hand of its status.

Q - What level is the vessel?

A - This expedition is based on a brand new expedition ship which includes amazing cabins and suites for every level, up to a 44m² grand suite. Onboard the Magellan Explorer you can enjoy a full gym, sauna and top cuisine by our chef. All this is before we've even started talking about the experience itself which is incredible on its own.

Q - How far in advance should I book?

A - Although it might seem like we have a lot of time, we're actually in a rush since bookings for Antarctica are made way in advance. Booking earlier protects you from price changes, lets you choose your favorite cabin and category and assures your spot.

Q - How do I sign up?

A - Please contact the agent who you were in touch with, and our team will take the best care of you on this once in a lifetime expedition.

Operations



The Bridge



Library



Lounge

The Dining



Our Restaurant



Our Excellent Dinner with Variety of Dishes



Wonderful Cuisine

The Amenities



Sauna



Gym



Our Team at Your Service

CONTACT US FOR MORE!

Specification of the Magellan Explorer

Passengers	70 humans
Staff & Crew	60 humans
Length	91 meters
Breadth	16.2 meters
Draft	4.3 meter
Gross Tonnage	4900 gt
Propulsion	3,440kW Diesel Engines
Ice Class	LR PC6
Cruising Speed	14 knots



PRICING & DETAILS ANTARCTIC EXPEDITIONS

WHAT'S INCLUDED?

1. Special Chartered flight from Punta Arenas to King George Island
2. Special Chartered flight from King George Island to Punta Arenas
3. Ship expedition cruise onboard the Magellan Explorer.
Boarding on day 2, disembarking on day 7.
4. Daily buffet breakfast and lunch onboard ship, wide choice of dishes.
5. Daily served dinner onboard ship, a choice of 3 main courses.
6. Wine, beer, juice and soft drinks served at lunch and dinner onboard.
7. Coffee, tea, cappuccino, snacks onboard ship throughout cruise.
8. All guided shore excursions, lectures and entertainment onboard.

9. Loan of waterproof boots for shore landings
10. IAATO passengers fees for Antarctic alliance
11. Day 1 - Punta Arenas - hotel, transfers and breakfast
12. Day 9 - Punta Arenas - hotel, transfers, dinner and breakfast
13. All boat expenses (Fuel, Insurance, Docking fees etc.)
14. Preparation meeting and post trip meeting online.

NOT INCLUDED

1. International travel
2. Boutique consumptions
3. Phone, internet, e-mails
4. Insurance which you must have
5. Gratuity for ship's crew
6. All items not described in
"included in the above charter rates"

OUR TEAM IS ALL SET AND EXCITED TO MAKE YOUR DREAMS COME TRUE!



Explorer's Elite was founded by the people with the most direct access to the best stories in the world - Award winning Photographers, guides and Explorers.

Our experience and expertise, along side with unique approach and excellent connections have led us to create the Explorer's Elite Club - where we take our top VIP clients to the Adventures of a lifetime in the most luxurious conditions and experience.

Explorer's Elite is based in New York City.

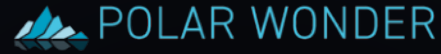


PhotoTeva is a top tier player in photography, adventure expeditions and workshops, with around 1,000 travelers per year, Phototeva is one of the largest companies in the world in its field.

All our field leaders are professional photographers and experienced guides, with outstanding knowledge and love for nature and people.

We work together with local suppliers in the highest standard, with special emphasis on eco-friendly suppliers.

Phototeva is based in Tel-Aviv



Polar Wonder is a leading travel company specializing in immersive expeditions and adventures in the polar regions, including the Arctic and Antarctic. Based in New York, Polar Wonder offers a range of unique experiences tailored to explorers, nature enthusiasts, and photographers who seek to discover the untouched beauty of the poles. With a focus on small group sizes and sustainable practices, the company ensures that each journey is both intimate and eco-conscious. All of Polar Wonder's expeditions are led by expert guides and seasoned polar specialists with a deep understanding of the fragile ecosystems and wildlife of these remote environments. Partnering with top-tier, environmentally responsible local operators, Polar Wonder delivers high-quality, impactful travel experiences that foster a greater appreciation for the planet's most pristine and awe-inspiring regions.



Paseos Polares fusiona aventura y lujo en expediciones únicas, impulsados por la pasión por la naturaleza y la conservación del planeta. Fundados por fotógrafos renombrados, ofrecemos viajes excepcionales a destinos antes inaccesibles, con todas las comodidades de lujo.

Durante más de una década, hemos abierto caminos a lo desconocido, brindando experiencias inolvidables sin perder la esencia aventurera.

Paseos Polares está ubicado en la Ciudad de México, el corazón de nuestras operaciones.



Together we are proud to create and lead the best expeditions out there!



.....

YOUR NEXT ADVENTURE STARTS NOW

.....

Contact us
info@phototeva.com

